

COUNTRYSIDE ADDITION

THE SW 1/4, OF THE SW 1/4, OF THE NE 1/4, OF SECTION 21, T 19 S, R 3 W, MCPHERSON COUNTY, KANSAS

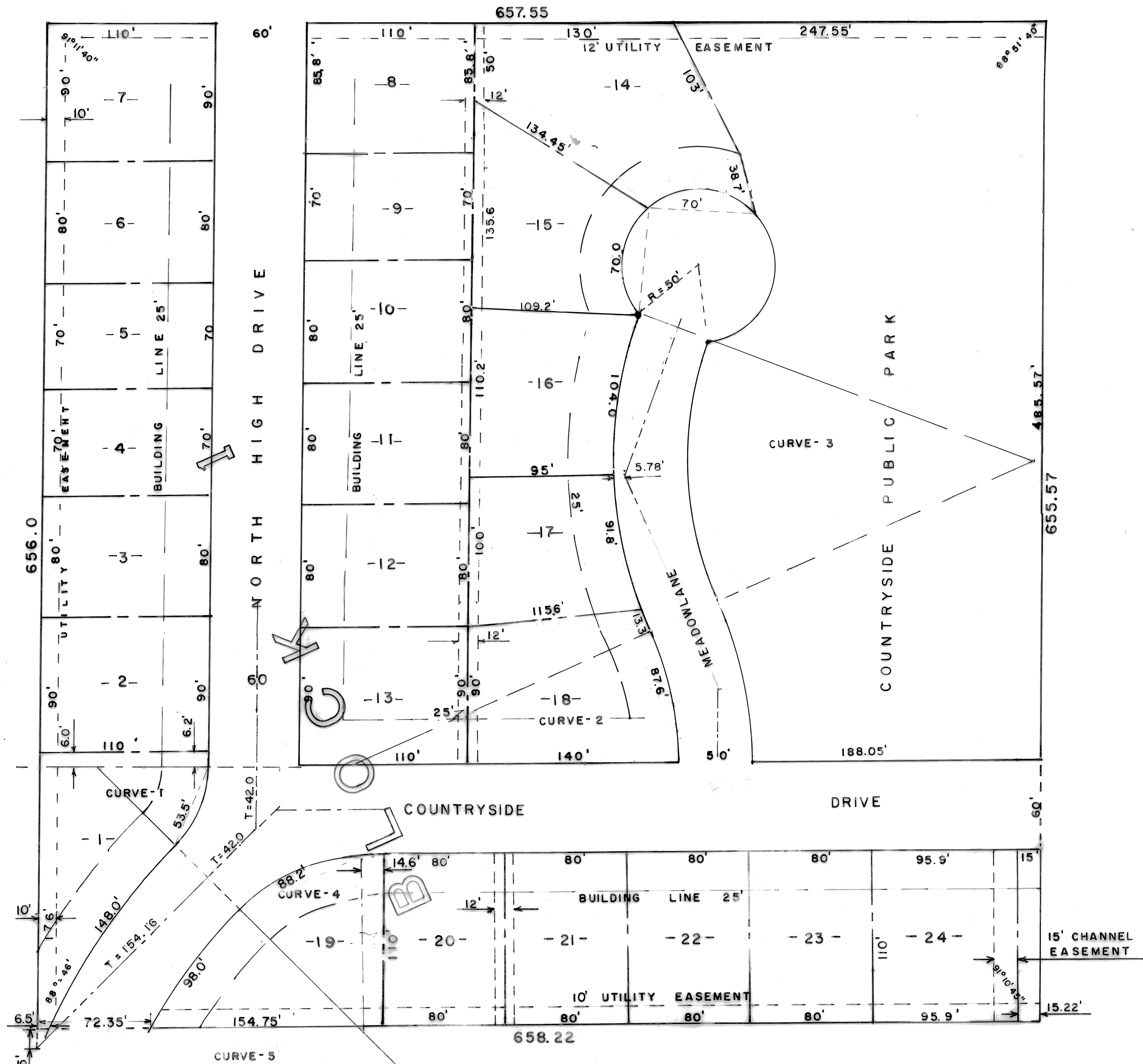
SCALE 1" = 50'

CURVE DATA AT CENTER EXCEPT #4
CURVE DATA

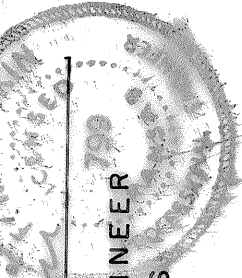
	1	2	3	4	5
Δ	45° 36'	Δ 22° 42'	Δ 43° 34'	Δ 43° 17'	Δ 45° 36'
T	42.0'	T 50.0'	T 100.0'	T 47.41'	T 154.16'
R	100.0'	R 238.30'	R 250.20'	R 119.5'	R 366.9'

LOT CURVE MEASUREMENTS
ARE SHOWN AS CHORD DISTANCES

State of Kansas, McPherson Co. SS.
This instrument was filed for record on this day of August, 1968 at 10:45 a.m., and duly recorded to book 9744 on page 15
Wanda Burt
Register of Deeds



SURVEYORS CERTIFICATE AND DESCRIPTION
I, FRANK RANKIN, A LICENSED PROFESSIONAL ENGINEER OF THE STATE OF KANSAS, CERTIFY THAT I HAVE SURVEYED, OR CAUSED A SURVEY TO BE MADE UNDER MY SUPERVISION, OF THE ABOVE PLAT AND DESCRIBED AS FOLLOWS: BEGINNING AT THE CENTER OF SECTION 21-19S-R3W, MCPHERSON COUNTY, KANSAS, - THENCE NORTH 656.01, THENCE EAST 657.55, THENCE SOUTH 655.57, THENCE WEST OR LESS.



SIGNED THIS 8 DAY OF August 1968
FRANK RANKIN
PROFESSIONAL ENGINEER
MCPHERSON, KANSAS

STATE OF KANSAS }
COUNTY OF MCPHERSON } SS

KNOW ALL MEN BY THESE PRESENTS, that Robert L. Rankin and Wanda Burt, Owners and proprietors of the lands above described in the certificates of surveyor, have caused the said lands to be surveyed into lots and under the name of COUNTRYSIDE ADDITION to the city of McPherson, Kansas, and have caused the same to be subdivided into lots, streets, avenues and public ways, as shown on the accompanying plat, and further that all streets, alleys and public ways are for the use of the public. The said subdividing addition and the land contained therein, is held and shall be conveyed subject to the restrictions and reservations and covenants on file in the office of the Register of Deeds of McPherson County, Kansas.

Wanda Burt, Kansas August 12, 1968

Signed Robert L. Rankin
Frank Rankin
City of McPherson, Kansas

STATE OF KANSAS }
COUNTY OF MCPHERSON } SS

Be it remembered that on this day 12 of August 1968 before me the undersigned, a notary public, duly commissioned in and for the county and state aforesaid came Robert L. Rankin and Wanda Burt, personally known to me to be the same, who executed the foregoing instrument of writing in this dedication, and he duly acknowledged the execution for themselves.

IN WITNESS WHEREOF, I have hereunto set my hand and official seal on the day and year last above written,

(seal)
Notary Public
My commission expires Sept. 5 1971

STATE OF KANSAS }
COUNTY OF MCPHERSON } SS

BE IT KNOWN, That the attached plat was submitted to the City Planning Commission of the City of McPherson, Kansas, and was by it approved on this 12 day of August 1968

Wanda Burt
Chairman of Planning Commission City
McPherson Kansas.

STATE OF KANSAS }
COUNTY OF MCPHERSON } SS

BE IT KNOWN, That the attached plat was submitted to the Zoning Board of McPherson County, Kansas, and was by it approved on the 12 day of August 1968

Robert L. Rankin
Chairman of Planning Commission
of McPherson County, Kansas.

STATE OF KANSAS }
COUNTY OF MCPHERSON } SS

BE IT KNOWN, That the attached plat was submitted to me and that the same is hereby approved this 12 day of August 1968

Charles O. Stacy
City Engineer
City of McPherson, Kansas

STATE OF KANSAS }
COUNTY OF MCPHERSON } SS

BE IT KNOWN, That the attached plat was submitted to me and that same is hereby approved this 8 day of August 1968.

Robert L. Rankin
County Engineer of McPherson County, Kansas.

STATE OF KANSAS }
COUNTY OF MCPHERSON } SS

BE IT KNOWN, That the attached plat was submitted to me and that the same is approved this 13th day of August 1968

Robert L. Rankin
City Attorney of the City of McPherson, Kansas.

STATE OF KANSAS }
COUNTY OF MCPHERSON } SS

BE IT KNOWN, That the attached plat was submitted to me and that the same is hereby approved this 13th day of August 1968

Robert L. Rankin
County Attorney McPherson County, Kansas